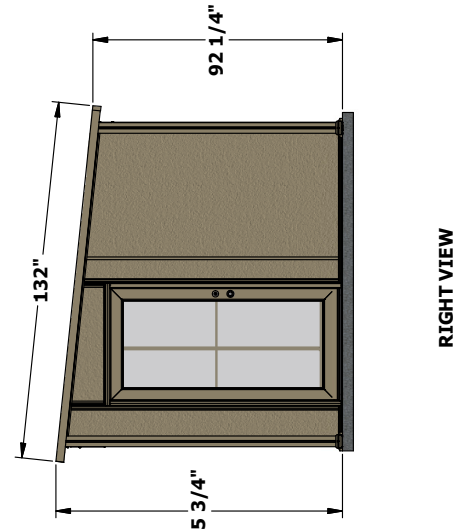
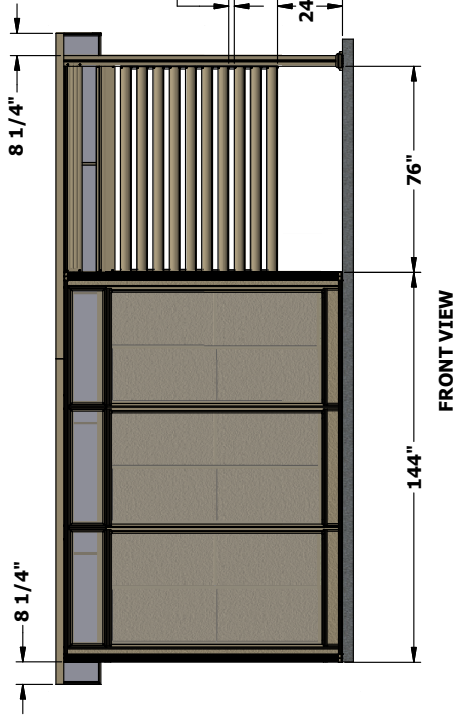
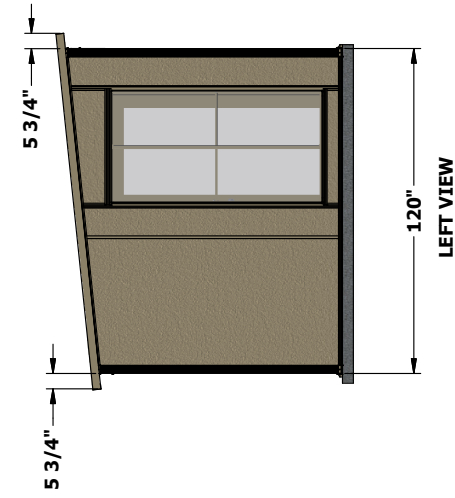
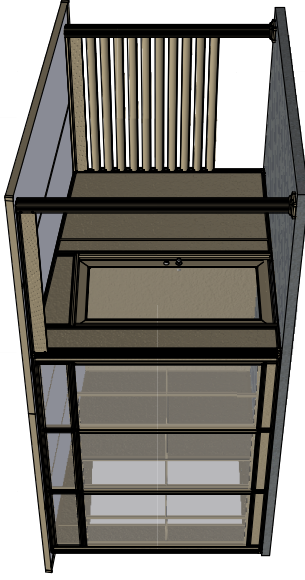
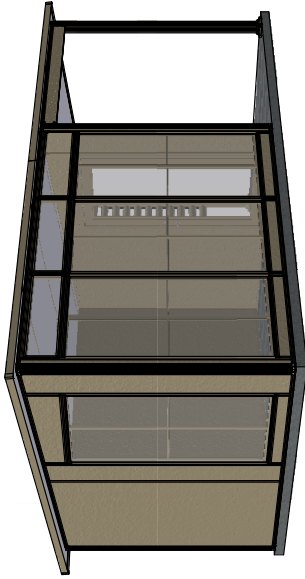
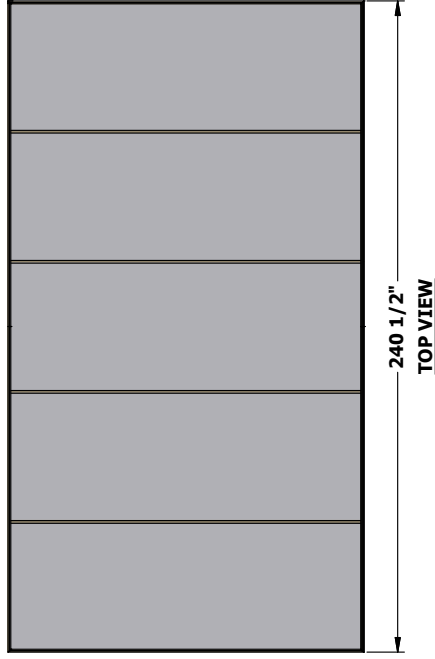
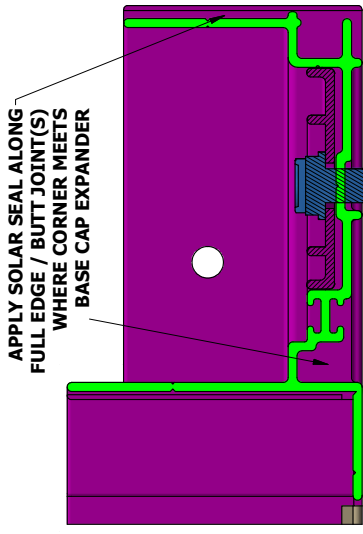


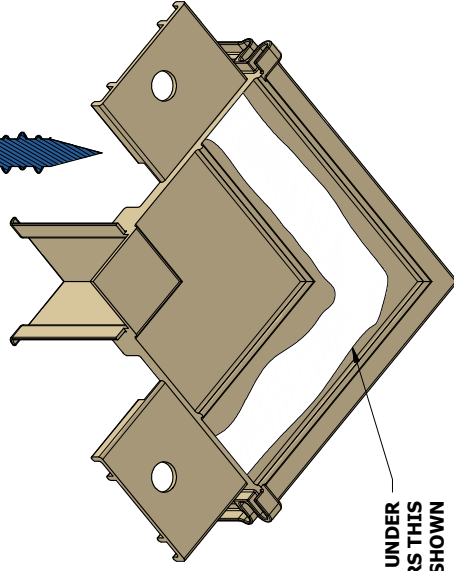
NAPLES LUXURY SHED 180°



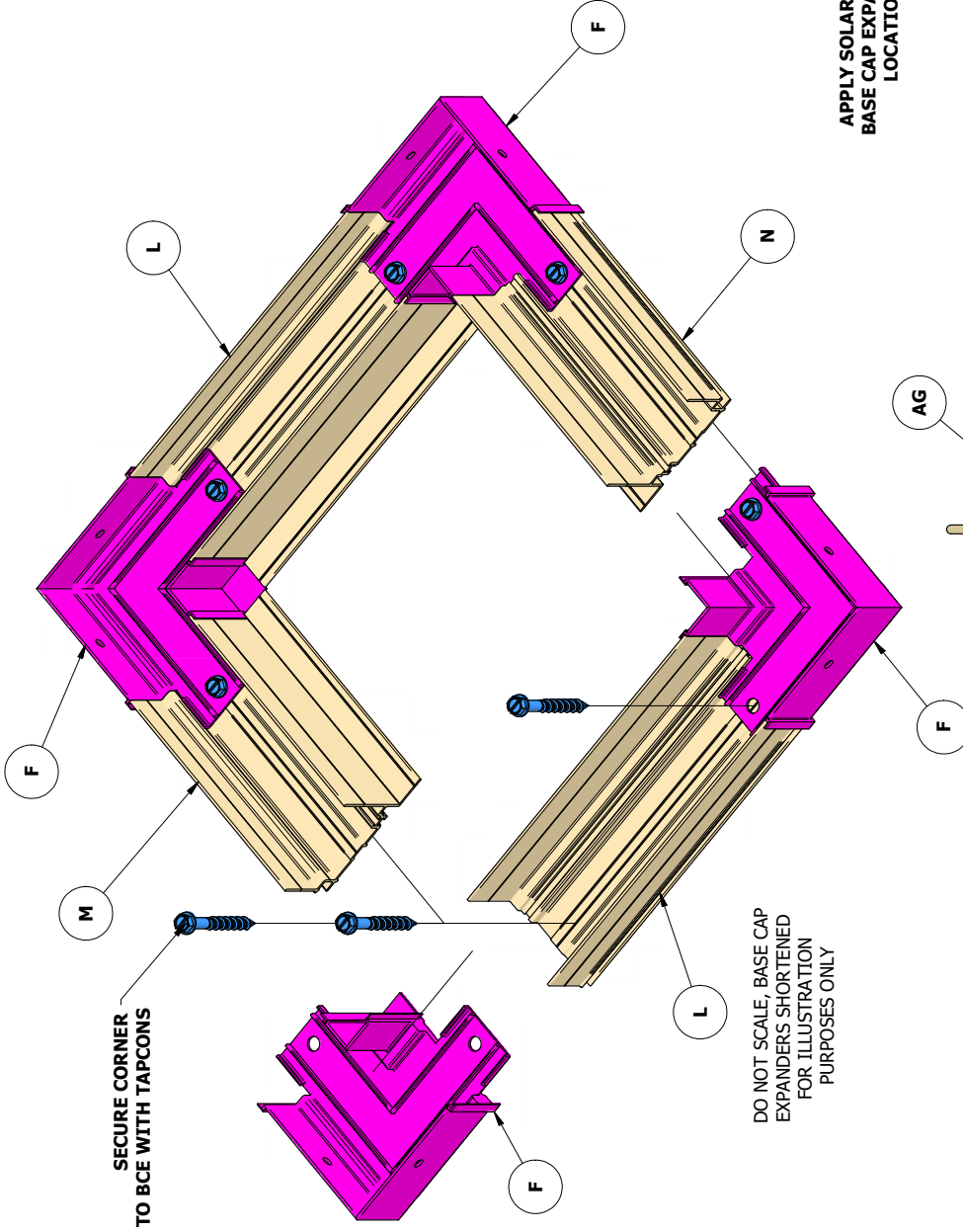
LUXURY BACKYARD LIVING.COM		20330 HALL RD. CLINTON TWP., MI 48038	
PRODUCT	PART NUMBER:	REV.	SIZE:
SHED	SA**NAPLES180-10X12	A	D
DESCRIPTION	NAPLES LUXURY SHED 180DEG-10X12		SCALE:
DEALER: N/A	FILE NAME: Naples 180.iam	©2023 LuxuryBackyardLiving.com	NONE
		DRAWN BY: mfrnk	DATE: 5/24/2023
		APPROVED BY: MCF	DATE: 5/24/2023
			SHEET: 1 OF 7



APPLY SOLAR SEAL ALONG FULL EDGE / BUTT JOINT(S) WHERE CORNER MEETS BASE CAP EXPANDER



APPLY SOLAR SEAL UNDER BASE CAP EXPANDERS THIS LOCATION AS SHOWN

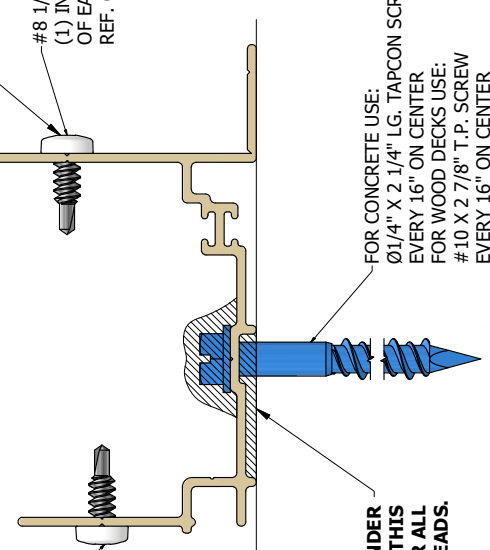


SECURE CORNER TO BCE WITH TAPCONS

DO NOT SCALE, BASE CAP EXPANDERS SHORTENED FOR ILLUSTRATION PURPOSES ONLY

STEP 1 LAYOUT BASE TRACK;
 A. LAY OUT ALL BASE TRACK COMPONENTS. WHEN SATISFIED WITH PLACEMENT, SEAL & SECURE BOTH BASE CAP EXPANDERS "N" AND "M" AND SECURE IN PLACE.
 B. SOLAR SEAL AROUND BUTT JOINT EDGE AND UNDER CORNER. ATTACH 2 CORNERS TO ONE BASE CAP EXPANDER "L" THEN SET INTO FINAL POSITION AS SHOWN. REPEAT FOR OTHER "L" BASE CAP EXPANDER.

#8 1/2" TEK SCREWS (1) INSIDE AND (1) OUTSIDE OF EACH WINDOW MULLION REF. ONLY



#8 1/2" TEK SCREWS (2) INSIDE AND (2) OUTSIDE OF EACH H CHANNEL REF. ONLY

FOR CONCRETE USE: Ø1/4" X 2.1/4" LG. TAPCON SCREW EVERY 16" ON CENTER FOR WOOD DECKS USE: #10 X 2 7/8" T.P. SCREW EVERY 16" ON CENTER

APPLY SOLAR SEAL UNDER BASE CAP EXPANDERS THIS LOCATION AND OVER ALL SCREW HEADS.

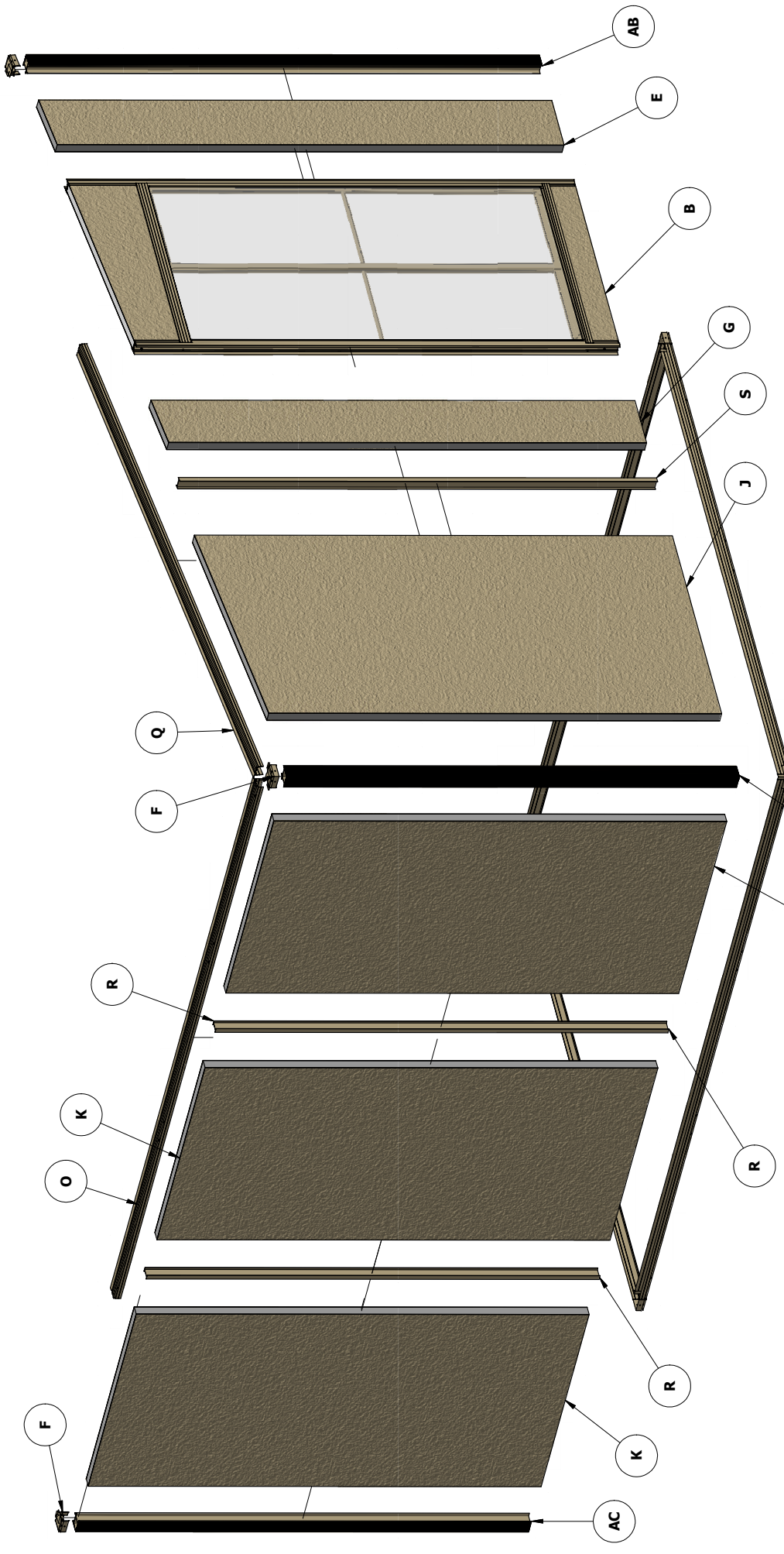
ITEM	QTY	PART NUMBER	DESCRIPTION
F	8	TI**-CCAP2	2in CORNER CAP
L	2	TI**-BCEX2X138M	2in BASE / CAP EXPANDER W/WEEP 138in
M	1	TI**-BCEX2X114	2in BASE / CAP EXPANDER W/WEEP 114in
N	1	TI**-BCEX2X114M	2in BASE / CAP EXPANDER DOOR NOTCH 114in
AG	2	TI**-SQP83076**	SQ PAN TEK SCR 100PK #8x0.5in

LUXURY
 BACKYARD LIVING.COM

20330 HALL RD.
 CLINTON TWP., MI 48038

PRODUCT	PART NUMBER:	REV.	SIZE:	DATE:
SHED	SA**-NAPLES180-10X12	A	D	1/26/2023
DESCRIPTION			SCALE:	DATE:
NAPLES 180DEG LUXURY SHED-10X12			NONE	1/26/2023

DEALER: N/A FILE NAME: Naples 180.iam ©2023 LuxuryBackyardLiving.com SHEET: 2 OF 7



PARTS LIST

ITEM	QTY	PART NUMBER	DESCRIPTION
B	1	SA**V2IN_13.5-86.0_NT_43X102_**	WINDOW ASSEMBLY 2IN VINYL SCREEN 13.5-86.0 NT 43inx102in
E	2	SA**AFPNI11.75X102X2	ALUM FILL PANEL 11.75INX102INX2IN 0.024 1#
F	8	TI**_CCAP2	2in CORNER CAP
G	1	SA**AFPNI11.438X102X2	ALUM FILL PANEL 11.438INX102INX2IN 0.024 1#
J	2	SA**AFPNI48X102X2	ALUM FILL PANEL 48INX102INX2IN 0.024 1#
K	3	SA**AFPNI46.125X90X2	ALUM FILL PANEL 46.125INX90INX2IN 0.024 1#
O	2	TI**_BCEX2X138	2IN BASE/CAP EXPANDER 2INX138IN
Q	2	TI**_BCEX2X114.625	2IN BASE/CAP EXPANDER 2INX114.625IN
R	2	TI**_HCHA90X2	H-CHANNEL 90INX2IN
S	2	TI**_HCHA102X2	H-CHANNEL 102INX2IN
AC	2	TI**_COMU90X2	CORNER MULLION 90INX2IN
AB	2	TI**_COMU102X2	CORNER MULLION 102INX2IN

LUXURY
BACKYARD LIVING.COM

20330 HALL RD.
CLINTON TWP., MT. AEROLINE, NJ 07033

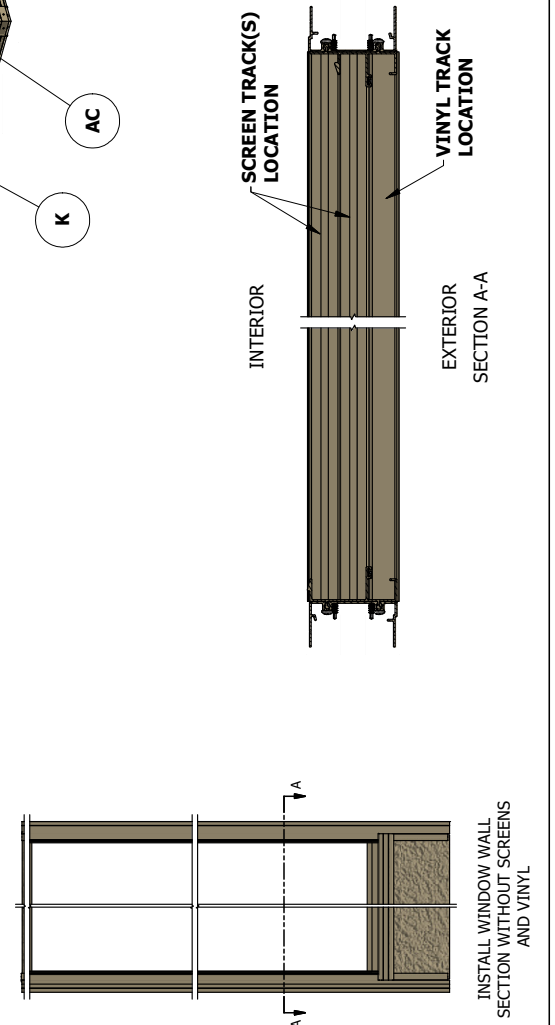
PRODUCT: SHED
PART NUMBER: SA**NAPLES180-10X12
REV. A

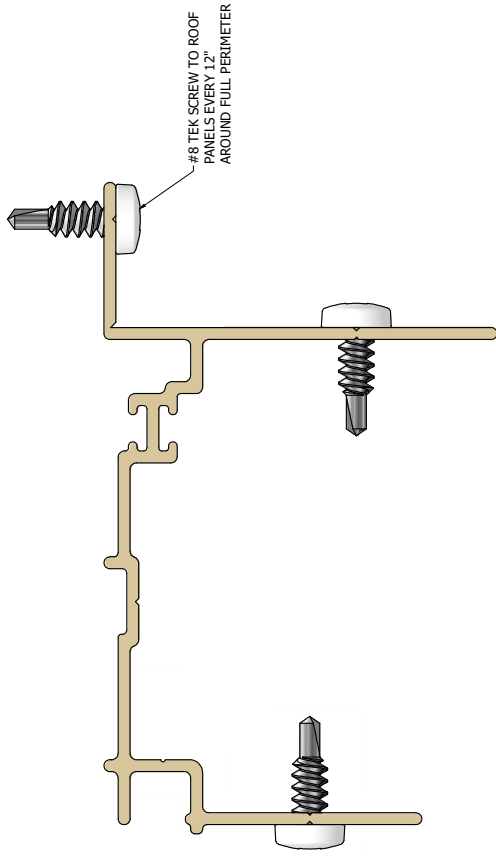
SIZE: D
SCALE: NONE

DATE: 1/19/2023
DRAWN BY: mfrnk
APPROVED BY: MCF

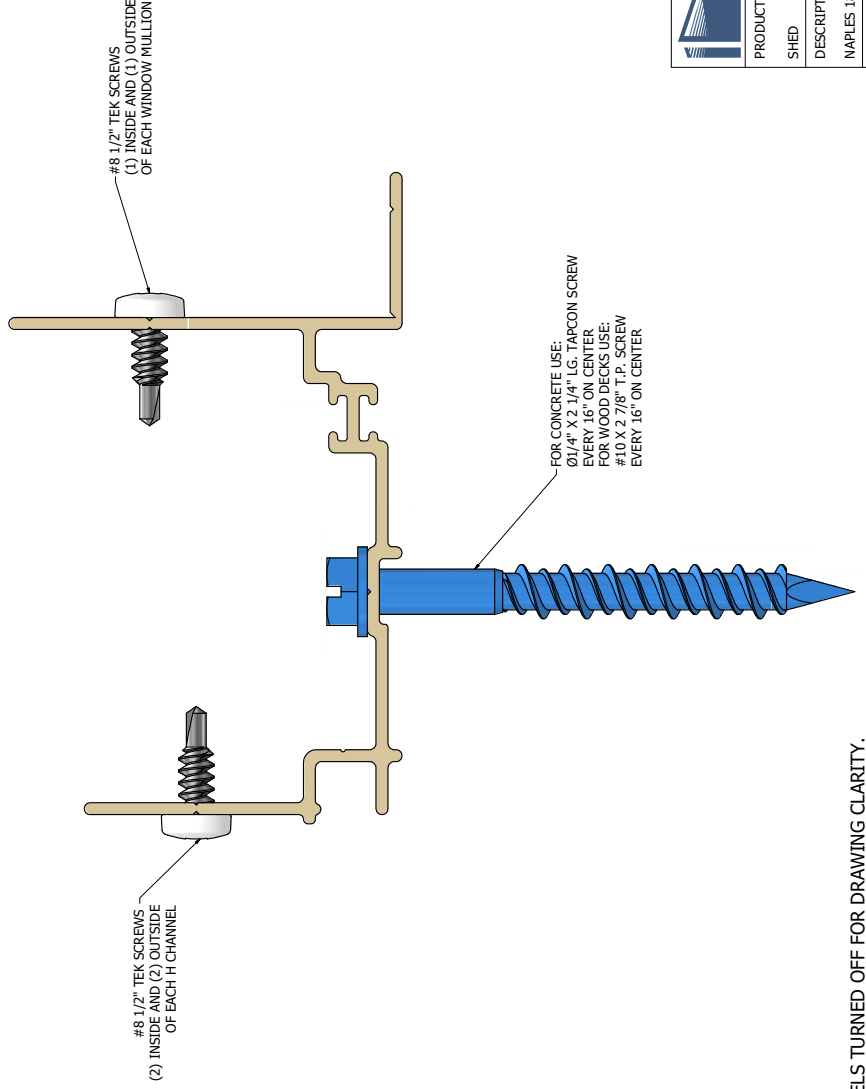
DESCRIPTION: NAPLES 180DEG LUXURY SHED-10X12
DEALER: N/A

FILE NAME: Naples 180C.lam
©2023 LuxuryBackyardLiving.com
SHEET: 3 OF 7

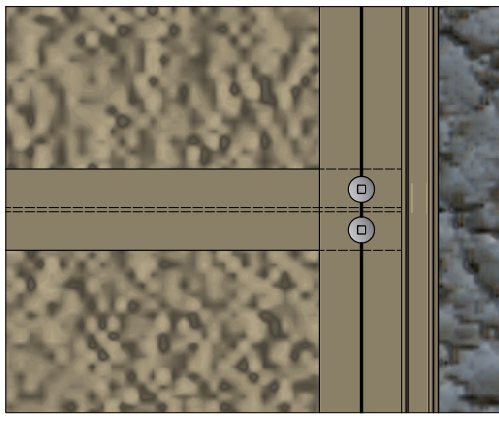




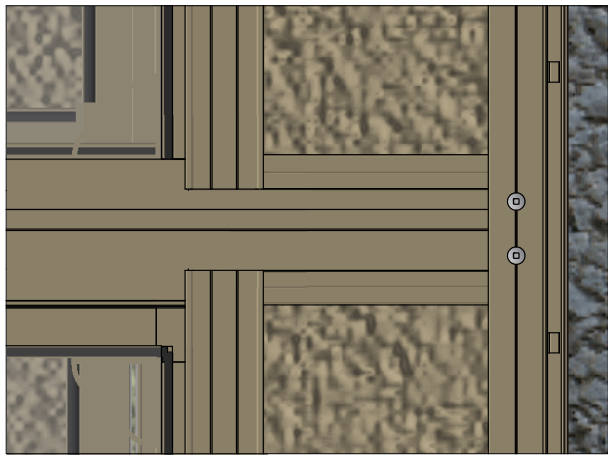
VIEW SHOWING SCREW POSITION
IN RELATION TO WINDOW MULLIONS



FOR CONCRETE USE:
0/1/4" X 2 1/4" LG. TAPCON SCREW
EVERY 16" ON CENTER
FOR WOOD DECK USE:
#10 X 2 7/8" T.P. SCREW
EVERY 16" ON CENTER



VIEW SHOWING SCREW POSITION
IN RELATION TO H MULLIONS



		20330 HALL RD. CLINTON TWP., MI 48038	
PRODUCT	PART NUMBER:	REV.	DATE:
SHED	SA**AFPL48X108X2	A	1/19/2023
DESCRIPTION	SALE:		DATE:
NAPLES 180DEG LUXURY SHED-10X12	NONE		1/19/2023
DEALER: N/A	FILE NAME: channel Wall cap screw		SHEET: 5 OF 7

NOTE: WALL PANELS TURNED OFF FOR DRAWING CLARITY.